



STARANDDAISY

MULTIFUNCTIONAL EARLY EDUCATION INTELLIGENT BABY WALKER

KEY FEATURES

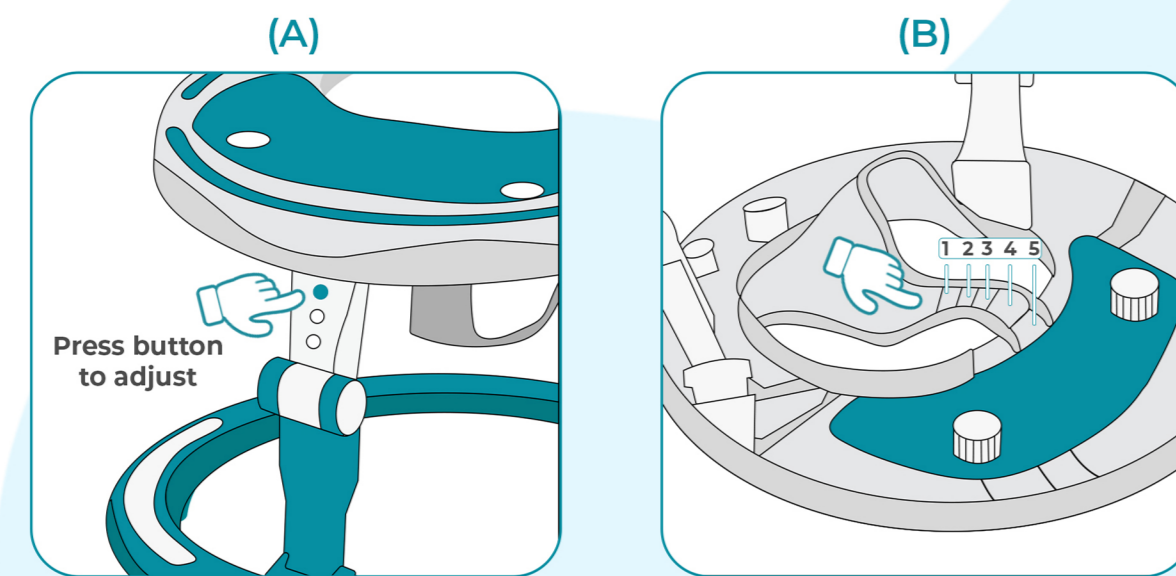
- Dancing Lights and Melodies
- Engaging Developmental Toys
- 7- Speed Height Adjustable
- Compact Folding



"User Guide For Installation and Operating"

HEIGHT ADJUSTING

Adaptability to your child's growth and developmental stages.

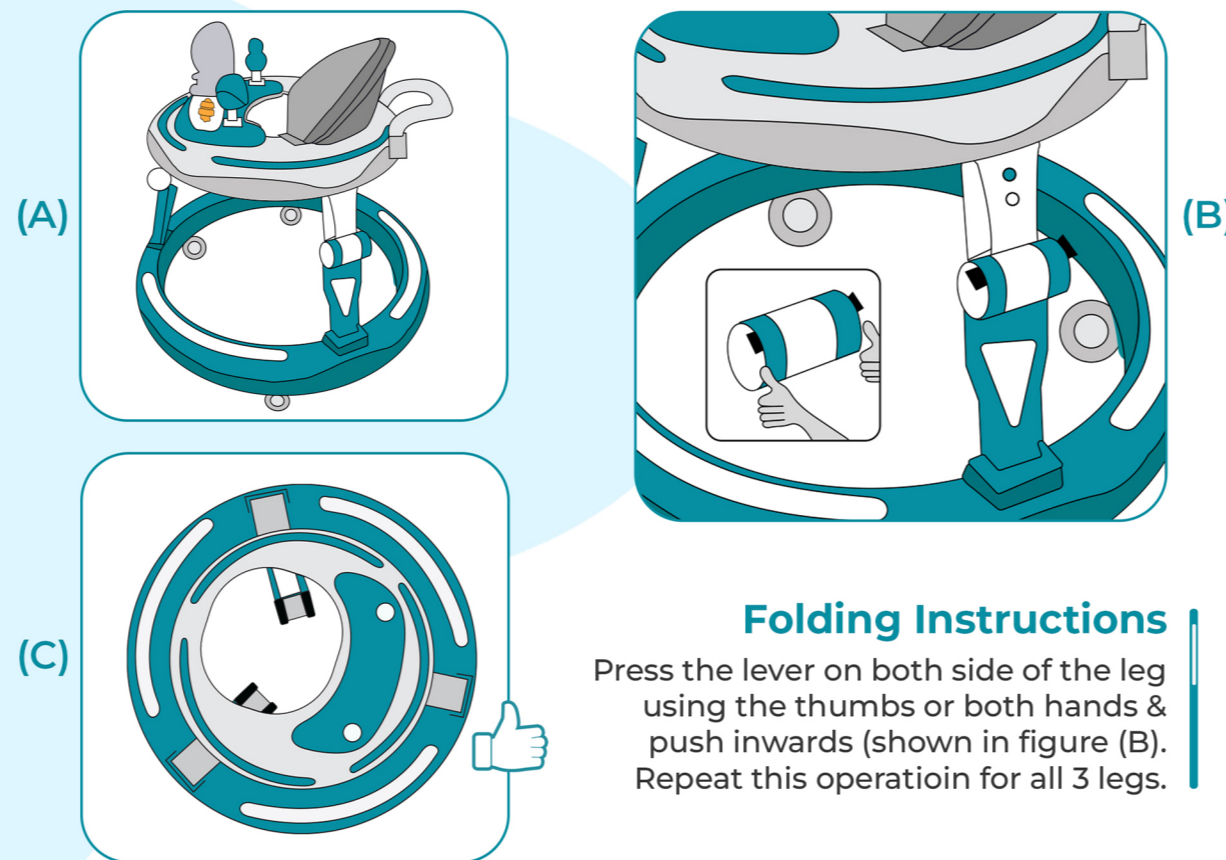


Height Seat Adjusting

3 position of the walker top frame as shown in figure (A).
5 position of the walker seat height adjustment as shown in figure (B).

FOLDING MECHANISM

Simple steps of folding your baby walker hassle-free.

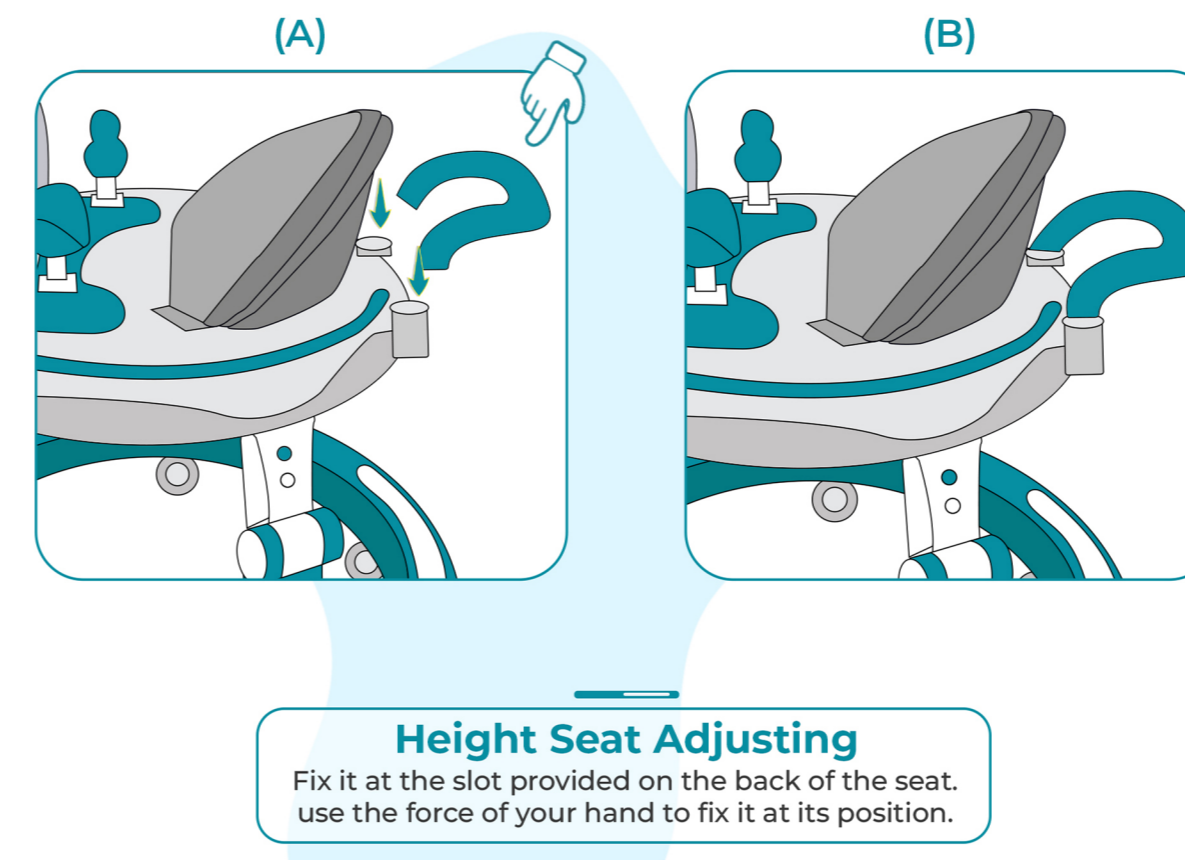


Folding Instructions

Press the lever on both side of the leg using the thumbs or both hands & push inwards (shown in figure (B)). Repeat this operation for all 3 legs.

PUSH BAR HANDLE SETUP

Provides a secure grip while guiding tiny steps.

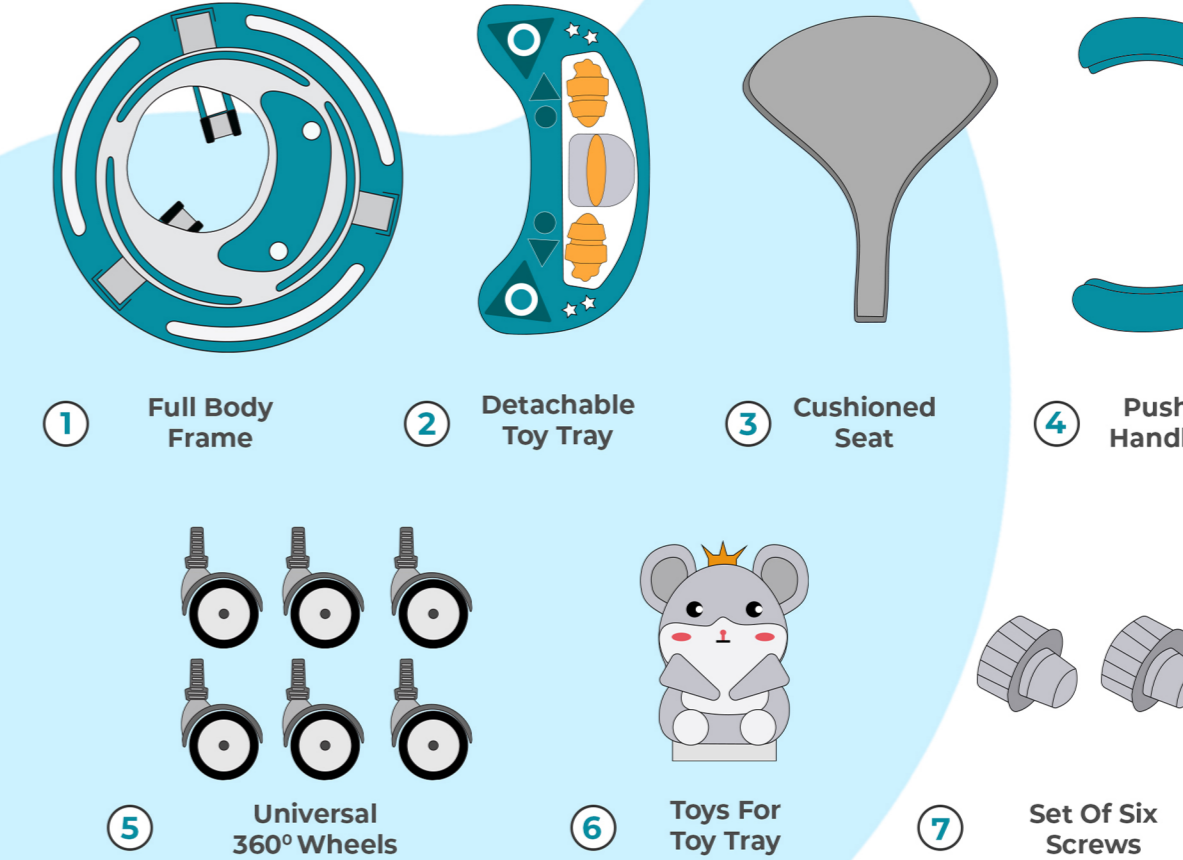


Height Seat Adjusting

Fix it at the slot provided on the back of the seat. use the force of your hand to fix it at its position.

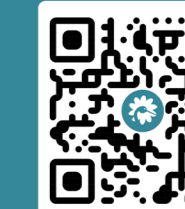
INCLUDED INVENTORY

The Unboxing Experience



STARANDDAISY

Premium Baby Care Products



Website Page

Video

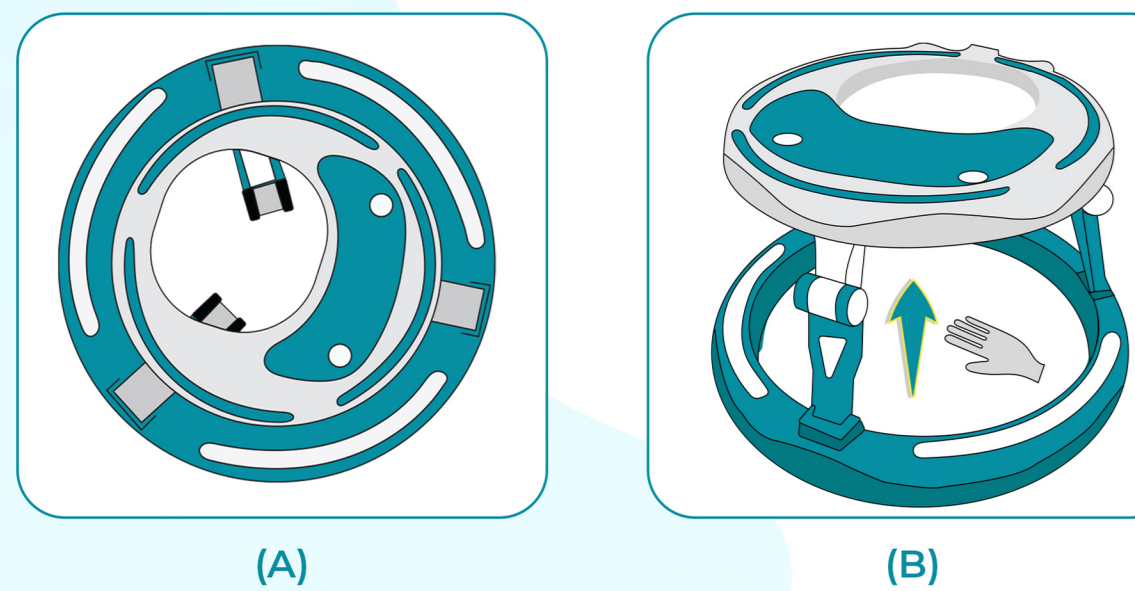
Scan Now For More Details

"Your Partner in this Beautiful Journey Called Parenting"

www.staranddaisy.in

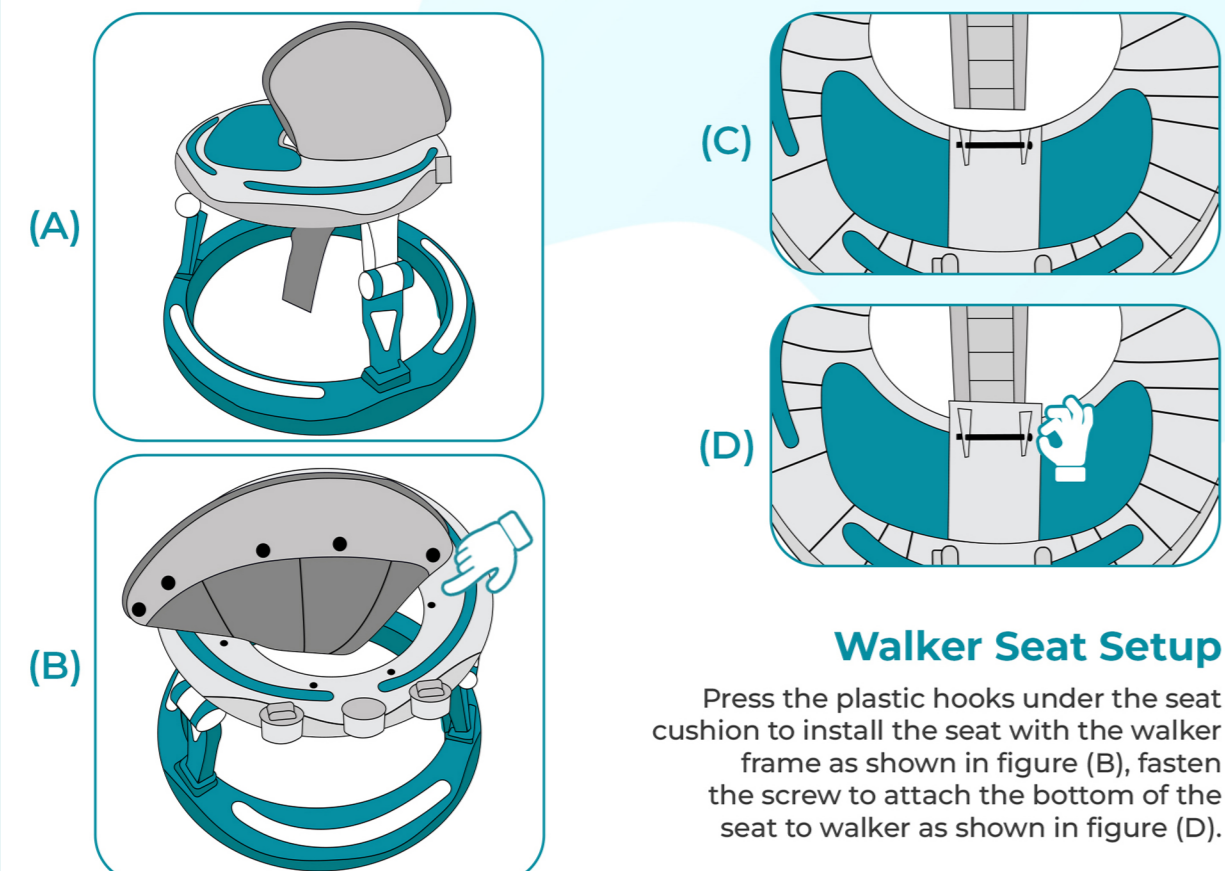
UNFOLDING THE WALKER

Unfold first to start the assembly of other parts.



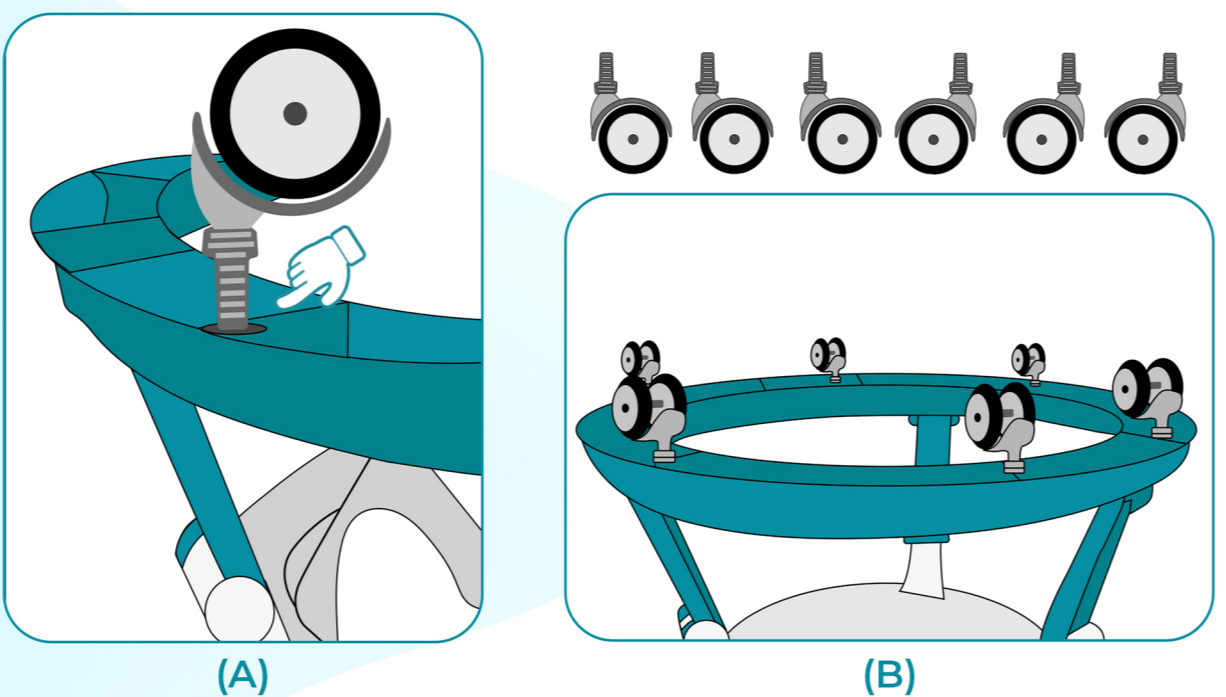
Height & Seat Adjustment

Pull up the walker head upward as shown in figure (B), you will hear click sound at all 3 legs to ensure it is unfolded successfully.



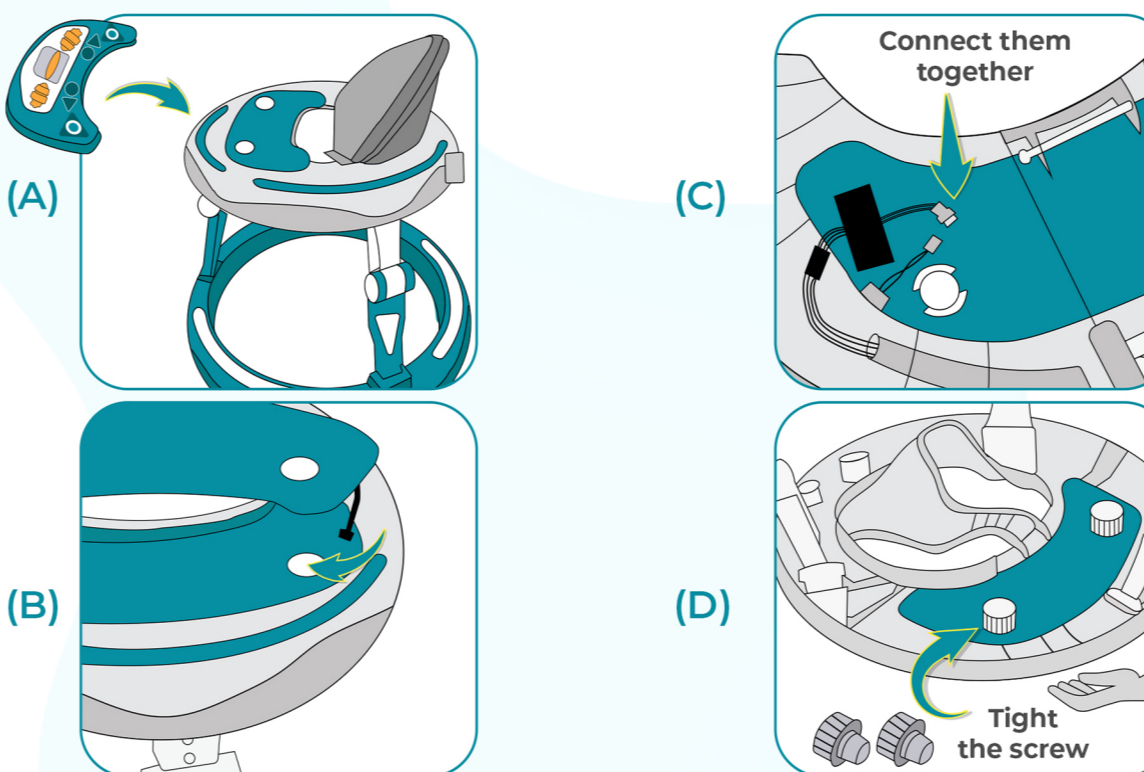
Walker Seat Setup

Press the plastic hooks under the seat cushion to install the seat with the walker frame as shown in figure (B), fasten the screw to attach the bottom of the seat to walker as shown in figure (D).



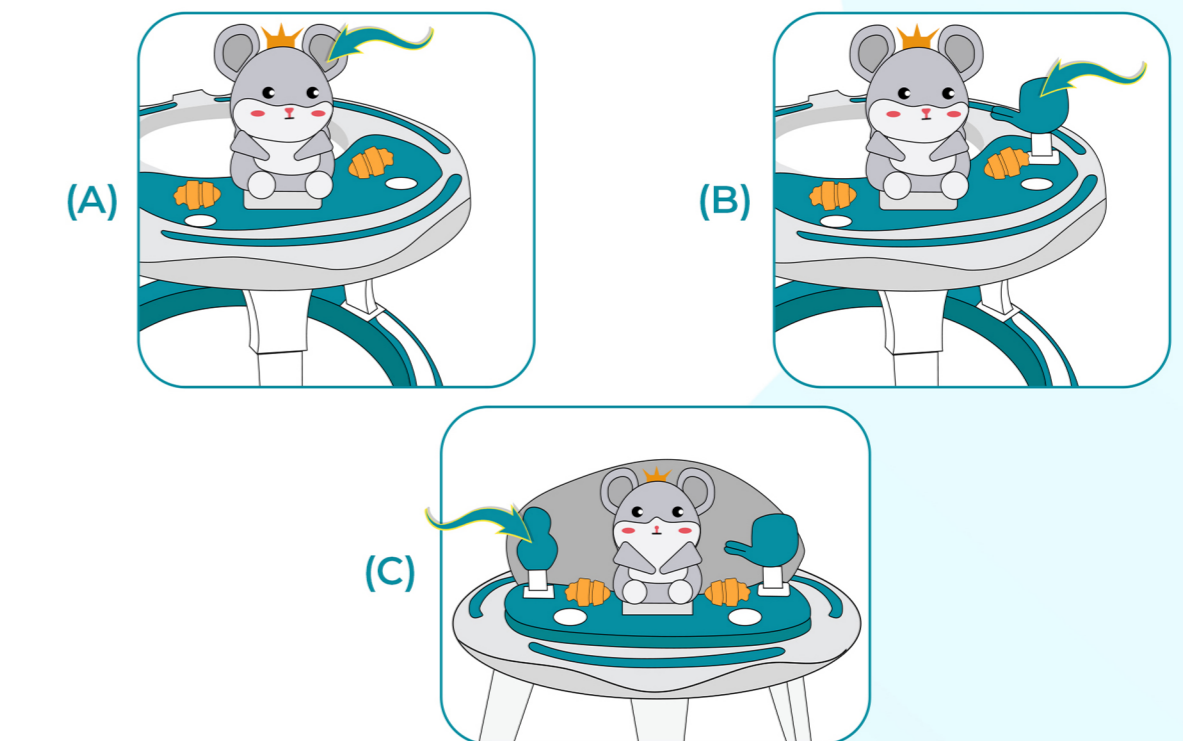
Wheels Setup

Turn the walker upside down and tighten the wheels as shown in figure (A). Ensure the seal of the wheel should touch the base fo the walker.



Toy Tray Setup

Place the toy tray over the walker tray & take out the connector wire to toy tray from the hole to the back side. Hold the toy tray with one hand to its right position and tightened both the screws.



Setup Toys in Toy Tray

Insert all 3 toys at thier respective position press them with the hand to fully fix.

WARNING

PLEASE READ THE INSTRUCTIONS CAREFULLY BEFORE USE, AND RETAIN THEM FOR FUTURE REFERENCE. YOUR CHILD'S SAFETY MAY BE AFFECTED IF YOU DO NOT FOLLOW THESE INSTRUCTIONS.

- WARNING!** Ensure that all the locking devices are engaged before use.
- WARNING!** Never leave the child unattended.
- WARNING!** To avoid injury ensure that the child is kept away when unfolding and folding this product.
- WARNING!** Always use the restraint system.
- WARNING!** Use a harness as soon as the child can sit unaided.
- WARNING!** DO NOT let the Child play With this product.
- WARNING!** Must use the lowest position for a child under 6 months.
- WARNING!** The walker is designed for one child only
- WARNING!** Never leave the walker with your child in it on an inclined surface, even brakes are locked.
- WARNING!** Do not use the walker if any screws, nuts, pins, etc. are missing, or if parts are damaged.
- WARNING!** Before assembly, make sure the product and all of its components are in good operating condition. If they are damaged, do not use the walker.
- WARNING!** No additional mattress shall be added.
- WARNING!** Use only original, manufacturer-approved spare parts.
- WARNING!** Accessories that are not approved by the manufacturer shall not be used.
- WARNING!** Do not carry the walker with the child inside. Do not push the walker down the stairs.
- WARNING!** The weight and age of the child for the vehicle is suitable for up to 15kgs or 3 years whichever comes first.